



## Issue No: 140

# Driving the wheel of fellowship November '16 Newsletter

### November

### Speaker Finder Grace & Thanks

Monday 7th Normal Meeting Elaine Turner Peter Hammond

Thursday 10th Council

Monday 14th Business Meeting

Monday 21st Normal Meeting Mark Thompson Steve Tallis

Monday 28th Normal Meeting Carola Sander-Hess Ted Wilson

### December

Monday 5th Normal Meeting Martin Iliffe David Toone

Thursday 8th Council Meeting

Monday 12th Joint Christmas Dinner IW Lutterworth Golf Club

Monday 19th Christmas Lunch

Monday 26th Christmas Holiday

If you are unable to carry out your 'duty' please find a substitute and tell **David Ayres** Tel: 01455 202224 email [ayres4feet@btinternet.com](mailto:ayres4feet@btinternet.com)

## **Bruntingthorpe Proving Ground -19th September**

There was a presentation by Paul Atkin, General Manager of Business Development at the Bruntingthorpe Proving Ground. Paul gave a presentation titled 'Bruntingthorpe Proving Ground – not just about testing cars!' in which he gave the meeting an insight into some of the more non-traditional uses for the proving ground. Paul gave the group an overview of activities that included how the proving ground can get used as a safe environment for various activities:

Highway Agency Officer training including how they all get trained on everything from righting a rolled over vehicle through to how to remove a broken down vehicle from the motorway  
Traffic management staff training including how to lay out the complex cone layouts we all see on the motorway

Road sign visibility trials  
Test and sign off of new roadside technologies including the dreaded speed cameras  
Police training including stinger deployment training, TPAK training and diplomatic protection training

Following this, Paul gave a fascinating insight into the work that Bruntingthorpe do with the Institution of Traffic Accident Investigators with their annual event to simulate road traffic accidents in a controlled way. They use radio controlled cars to crash into static cars to form the accident so that investigators can understand more about the accident scenes that they attend.

Finally Paul gave an overview on the work that is conducted to support autonomous vehicle trials where driverless vehicles are tested to support both civilian and military applications.

-0-0-0-0-0-0-0-0-0-0-

### **macmillan Coffee Morning September 2016**

PJ's Karter's Café

Lutterworth Rotary supported on Sunday 25th September PJ's Karter's Café and their **macmillan Coffee Morning**. Since Danny and members of his family took over PJ's Café in Lutterworth they have worked really hard in bringing customer's back to this 'Hidden Gem'. Karter's are well known for their homemade cakes so what better way to let everybody try them than for charity! Charlie the Kitchen Manager of PJ's – Karter's Café, has always supported **macmillan**. Since moving into PJ's – Karter's Café, Charlie and the team wanted to support MacMillan in a completely different way. PJ's was the first retail business in Lutterworth to join the **macmillan** Coffee

Morning September 2016. On their **macmillan** Coffee morning on 25<sup>th</sup>



September the doors were open well before 10am, which was a good job as by 10.30 am they were full of people queuing up to taste their wonderful cakes alongside the hot coffee and tea. You just helped yourself to your drinks and cakes and

placed a donation in the box. The day was wonderful; the staff donated their time, the drinks and the freshly made cakes to this **macmillan** event. Together they raised £515. Lutterworth Rotary is pleased to help and support people and businesses in Lutterworth and District.

*Sian, Charlie, Elsie Taylor and Roger*

Roger Rose President Lutterworth Rotary made a visit to Charlie and the team and presented a cheque for £50 towards this fund raising event.

-0-0-0-0-0-0-0-0-0-0-

## **A Yarn and all that - 17th October**

Sue Postlethwaite introduced us to friend Ruth McCartney both a Spinner and avid knitter who spoke about the art of spinning. She told us that there were currently about 60 breeds of sheep in the UK but not all of their fleeces were suitable to produce wool for spinning yarn. She went on to say that man had been spinning fibres for centuries as woven cloth cannot be made without producing yarn or thread. The Chinese processed silk as did the ancient Egyptians who processed flax into linen and surely used the earliest form of spinning apparatus, known as the drop spindle. It was simply a weighted stick onto which yarn was wound with a twist as the stick was dropped downward pulling the thread from the pack of unspun fibres. There is uncertainty about the development of the spinning wheel as some argue it was developed in China as early as the sixth century for silk and ramie spinning while others believe it may have developed later in India for cotton.

Western examples throughout the Middle Ages were both rimless and had a hoop rim. By the fourteenth century the hoop rim spinning wheels appear to overtake others in popularity. The Flemish who settled in the British Isles brought with them strong textile traditions and with that brought improvements on the traditional spinning wheel. Great wheels with very large driving wheels were known by the sixteenth century in the British Isles solely for the spinning of wool. Endless small variations were made in the wheel to ensure efficient spinning until the present, as some modern manufacturers do not reproduce old examples precisely but make their own wheels that are attractive and effective.



Spinning wheels were one of the first tools to be supplanted by modern machinery, Richard Arkwright, an English Industrialist, developed a method for machine spinning cotton by the middle of the eighteenth century and American Samuel Slater stole the system and brought it to Rhode Island, running it by water power. Large manufacturers today use industrial spinners to produce millions of yards of thread or yarn each day and the old spinning wheel is only used by hobbyists.

### **Joseph Morris Butchers - 25th October**

Mathew Morris the 3rd generation of the founder spoke to us about the Company and the changes that have and are happening as of today. The business was established between the two world wars in 1930 and now employ some 76 people. He told us that all livestock is sourced from local farmers, which ensures uniformity of quality while supporting

the local farming community. By being local—from the farm to the abattoir minimises stress to the animals—animal welfare being one of their priorities.

Recently they have opened a kitchen where they now make their own pork pies, sausage rolls and patés complimenting their established range of home—cooked hams, roast pork, beef and turkey.

Their abattoir is regularly inspected by the FSA (Food Standards Agency) and they employ a resident Vet to protect the welfare of the animals processed.

Thank you Mathew for a most interesting talk which prompted a host of questions.

**-0-0-0-0-0-0-0-0-0-**

## **100 CLUB PRIZE DRAW RESULTS 2016**

21st December 2015

Christmas Prize Draw

1st Prize - Graham Johnson (23)

2nd Prize - Tony Mikunda (32)

3rd Prize - David Toone (96)

!5th February 2016

1st Prize - Bernard Duesbury (53)

2nd Prize - John Wilson (25)

3rd Prize - Val Mikunda (4)

18th April 2016

1st Prize - Marie Tansley (76)

2nd Prize - John Howell (67)

3rd Prize - Suzie Rocher (5)

4th July 2016

1st Prize - Tony Hirons (43)

2nd Prize -Debbie Bradshaw (80)

3rd Prize - Bill Smith (70)

15th August 2016

1st Prize - Brenda Burton (24)

2nd Prize - Peter Hammond (18)

3rd Prize - Peter Wallace (86)

10th October 2016

1st Prize - Peter Osborn (13)

2nd Prize - Hugh Robertson Smith (47)

3rd Prize - Tony Hirons (43)

-0-0-0-0-0-0-0-0-

## **The Enterprise Centre Open Day 7th October**

The Enterprise's Open Day on Friday 7th October was a great success where it was explained why it was going independent through lack of government funding. Alberto Costa our local MP praised Jane Beaumont and her team of three for taking on the challenge to keep it running as an independent training organisation in the town.

For the past 12 years The Enterprise Centre has provided an outstanding practical curriculum and high quality pastoral care for key stage 3 and 4 level students from Lutterworth College who, for various reasons, have become disengaged from learning and main school provision.

The Centre has now become an independent charity with outside funding.

OFSTED have repeatedly judged the Centre as outstanding.

Funding is being sought to allow the continuation of the Centre to offer practical education in two different strands which complement and support each other.

Strand 1 - Alternative provision for school students aged 9 -18.

Strand 2 - Accessible Community Education

**Strand 1** - Students who are under-achieving in an academic environment benefit from practical courses in small groups in a calm, encouraging and positive learning atmosphere. Success is achieved in practical areas including woodwork, pc maintenance , arts and crafts, horticulture, hand care, cooking and wallpapering leading to nationally recognised qualifications as well as regular involvement in volunteering and community projects. Individual support is given to improve social skills and wider issues not necessarily related to education.

Experience over 12 years has ensured that over 95% of students at The Enterprise Centre have progressed to Further Education—apprenticeships and employment.

**Strand 2** Accessible Community Education is also open to learners from the whole community who wish to pursue activities in a positive learning atmosphere.

This is but a precis of her talk which was well received by all present.

-0-0-0-0-0-0-0-0-0-

### **Why is “abbreviated” such a long word?**

#### **Tommy Cooper:**

He said, 'I'm going to chop off the bottom of one of my trouser legs and put it in a library. ' I thought 'That's a turn-up for the books.

I went to the doctors the other day and I said, 'have you got anything for wind?' So he gave me a kite.

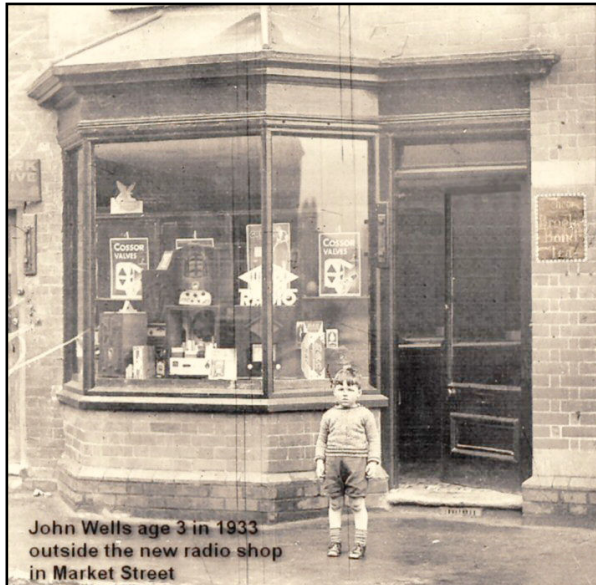
I went to the Doctors the other day, and he said, 'Go to Bournemouth, it's great for 'flu. So I went, and I got it.'

A woman told her doctor, 'I've got a bad back. 'The doctor said, 'It's old age.' The woman said, 'I want a second opinion. 'The doctor says, 'OK. you're ugly as well.'

-0-0-0-0-0-0-0-0-0-

## The end of an era for John Wells

### Early Years from our Octogenarian



*Picture by courtesy of John Cookson found on the Internet*

## Future Events

### Morrisons Collection -

Monday/

Tuesday 12/13 December contact Mark Thompson (554891) for details

Don't forget The **Santa Fun Run** is on Sunday 27th November starting at 11 a.m. at the Lutterworth College

*Peter J Osborn Rossett Green Valley Lane Bitteswell Leics.*

*Tel: 01455 553178*

*email p.osborn@homecall.co.uk*