



**Issue No: 169**

**Driving the wheel of fellowship**

## **April '19 Newsletter**

**Programme for the next two months.**

### **April**

### **Speaker Finder**

### **Grace & Thanks**

Monday 1st Normal Meeting Mike Toone John Roberson  
Monday 8th Normal Meeting Sally Parkinson Elaine Turner  
Thursday 11th Council Meeting 7-30 p.m.  
Monday 15th Business Meeting  
Monday **22nd Easter Holiday**  
Monday 29th Normal Meeting Graham Johnson David Ayres

### **May**

**Monday 6th May Day Holiday No Meeting**  
Thursday 9th Council Meeting 7-30 p.m.  
Monday 13th Normal Meeting Rose Chapman Anne Baker  
Monday 20th AGM and Business Meeting  
Monday **27th Spring Bank Holiday No Meeting**

If you are unable to carry out your 'duty' please find a substitute and tell **David Ayres** Tel: 01455 209074 email ayres4feet@btinternet.com

## **.Please NOTE**

The **AGM** will be moved from the 13th May to the 20th but Council will remain on the 9th May.

**Indoor Bike Ride (*Spinning*)** Sunday February 24th 2019 Lutterworth Sports Centre played host [for a third year] on Sunday February 24th to Lutterworth Rotary Club's 'Spin into Spring' Indoor Cycling event. The club teamed up again with spinning instructor Richard Stannard to run six one hour spinning sessions giving cyclists a 'virtual trip' around some of the world's more famous cycle rides, all with musical accompaniment. The event itself was a fundraiser for the Cystic Fibrosis Trust, Rainbows & other Rotary supported charities.

There was a great response, with entries for over 140 time slots ranging from people who had never stepped onto a static bike before to others who were used to cycling marathons and had booked to ride for all six hours. Entrants were plied with free refreshments and responded generously by supporting the raffle, cake stall and 100 square competitions. A physio was on hand to revive flagging legs and there was a great atmosphere in the Sports Centre for the whole afternoon. President of Lutterworth Rotary Club, Mark Thompson, said 'The Indoor Bike Ride has been a great event to be involved in again. Not only does it raise a lot of money for some good causes but it encourages people to keep fit and acts as another way in which the community can come together & have some fun'.

It is expected that approx. £2,500 will have been raised for the nominated charities. Particular thanks are due to the management and staff of Lutterworth

Sports Centre for providing the venue and for all their support in its delivery.

The next Rotary Club cycle event will be the **Lutterworth Big [Outdoor] Bike Ride** which this year is provisionally booked to be held on **Sunday 18th August**



Long Distance Riders pictured are from left to right Richard Stannard ) Trevor Weston (centre) and Neil Parry (right)

## Little Faces Schools Mombasa Kenya

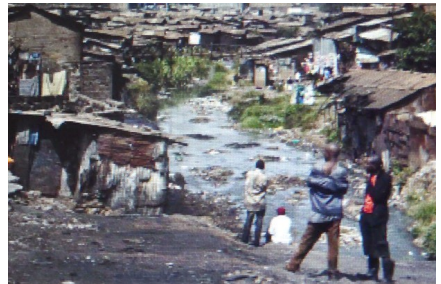


At the last Business Meeting on 18<sup>th</sup> February a sheet was placed on each table showing two young children who we are sponsoring from "Little Faces Schools" in Mombasa, Kenya.

In looking around I noticed that many of our newer members knew little about this. So, I thought I, with John Turner's help would give you a short summary of how this came about.

*The old original school*

*The area it is situated in.*



"It all started when, in 2011, a Rotarian from St Neots Rotary Club, Sally Harrison, was on holiday in Mombasa, Kenya. While there she met Mary the Head Mistress of **Little Faces School** and was so impressed by her dedication to the children that she decided to support her efforts in any way she could.

The School is in one of the poorest communities in Mombasa in Kenya where education is a privilege and not usually accessible for poor children. In 2011 there were 35 children in one classroom at Little Faces. The school was in such a state of disrepair it was not safe. It was a rusty tin shack that was held up with sticks. The children were trying to write on the rough floor as they had no desks and very few chairs. It had no toilet facilities for the children, just a disgusting small room used by the entire community with no running water.

Thanks to funds raised through Rotary, DHL, and many individuals there is now a new stone building with four classrooms

and new toilets specially for the children. They also have hand washing facilities as previously they could not afford the water to use for washing.

The children now have desks and chairs, stationery, books, 7 computers and a printer.....which is just as well as the school has grown in size until it now provides education to 250 children.

They also now have got some simple playground equipment and are learning to have fun! "

The two Children pictured below - Briton Okok and Hellen Ochieng are the two children currently being sponsored by our club.



### **Bernard's talk on his life**

Bernard posed the question: "How did I come to be in Lut-terworth, a Rotarian and raise five children?"

He said there were many events, some almost insignificant, that changed the direction of his life. His father came from a small village on the eastern edge of Hull called Bilton. His mother had an older sister and on 19th January, 1922 a baby sister was born and sadly their mother died on 28<sup>th</sup> January.

The sisters aged 10 and seven with baby Joan were taken

in by their childless mother's sister and husband at their home in Bilton. Joan, now 97, wrote a moving account of her gratitude to her selfless adoptive parents and that she was far from the ideal daughter. They put all three girls through private education and had a tin containing money in the sideboard which the girls were allowed to take at will should they need some cash.

Joan was a Wren in the war and worked a computer called Johannesburg at Bletchley Park.

Bernard's parents were married in April, 1941 and during the following months 86,722 houses out of a total of 92,660 in Hull were either destroyed or damaged making 152,000 people homeless.

His mother was booked into Townend Maternity Home at a cost of £5 5s 0d per week. This was also the birthplace of Ted Wilson and Dr. Graham Johnson.

Passing his 11plus Bernard's best subjects were maths, physics and chemistry at 'O' level. At 16 he applied for an engineering student apprenticeship with excavator manufacturers Priestman Bros. and he read out their letter which stated that they were not taking any apprentices that year.

An application to Boots Chemist resulted in him going back to school to take 'A' level physics, chemistry and zoology with plans to go to Bradford University to read Pharmacy.

Halfway through 'A' levels he went off the idea of working in a shop.

A chat with a neighbour made the Customs and Excise a possible career but he would not qualify for entry at the time because of his age until six months after leaving school.

Following a chance conversation with a school pal he applied for a job in a Bank and was accepted by the Midland Bank a position he thought would be for six months but lasted 10 years.

Bernard met Lesley when they worked together at Witham branch. She lived in Bilton, they biked to work together and married in 1964. They had two children Mark and Louise.

From the age of 15 Bernard worked Saturdays and school holidays on a market garden/farm and later in his 20's ran a local market garden during his holiday to give the owner a week's holiday. He also helped him at 3.30 a.m. to pick and pack 3,000 head of celery or lettuce ready for the lorry to collect at 7am. then a quick change and on to the Bank job.

His market gardening experience gained him the job of sales office manager with Westdock plc the largest manufacturer of commercial glasshouses. His banking qualification was augmented with the diploma in marketing which had a bearing on future employment. When sales manager of a tool and hardware business his boss put him forward for a Rotary Group Study award. Five men were chosen from Yorkshire to be a team which would visit Ohio for two months in 1973. Not being a public speaker Bernard was told that the team would be giving talks to 35 Rotary Clubs. So to quell his fear he joined the Hull Speaker's Club.

A move to Charcon Pipes as marketing manager used his qualification to deal with advertising, promotions, PR, the Marketing Plan and Five year Plan for the company. Following a merger the company moved its head office to Leicester. Where Bernard and family moved to Dunton Bassett in 1975. He joined the Speaker's Club in Lutterworth where he met fellow member Tom Mattock who brought him into Rotary.

In 1979 Bernard Joined Toye, Kenning and Spencer Ltd. as sales manager and later formed a new group company, Toye Corporate Clothing Ltd., as managing director.

Lesley died in 1989, she was a director of Universal Instruments Ltd. the only female director of an electrical testing instruments company in the country.

Later that year at work they were preparing a presentation for a large contract when one of the designers, Elaine, said to Ber-

ard she was running out of colours so off they went to the art shop and they engaged in a conversation about losing his wife and his mother's mother when she was only seven. Elaine said her friend had lost her mother when she was four and her husband had left her with two young boys. That year August bank holiday was the 28<sup>th</sup> his late wife's birthday and a week after what would have been their silver wedding anniversary. Bernard was down and went in to work but could not concentrate on anything. He remembered the conversation with Elaine and she put him in to contact with her friend Vanessa whom he phoned to ask her out for the day. Five years later Alice was born and she will be 25 next month.

## **Our Speakers on Monday 4th March spoke on the Leicestershire and Rutland Blood Bikes (LRBB)**

LRBB is a charity run entirely by volunteers who provide a free courier service to the local NHS hospitals and Air Ambulance.

Their main aim is to support the local NHS to reduce transport costs in order that more money can be directed to front line patient services and care.

They transport blood, blood products, biopsies and other medical essentials and also breast milk for use in neo natal units within Leicester hospitals. In addition to the local hospitals their service extends to Addenbrookes' in Cambridge and the Blood Bank in Sheffield. They have recently agreed to offer a service to local cottage hospitals one day a week.

Their group is run 100% by volunteers, many of whom are riders or drivers whilst others take on roles of Controller, Fundraising and Events and Membership. In order to cover their costs such as insurance, tax, service costs and fuel, they have to rely on public donations. Fundraising is therefore a vital part of their work, to keep their service up and running.

All their riders must hold advanced rider qualifications and strive for a highly professional service at all times. Their fleet now includes 3 motorcycles and 2 small vans. Their vehicles are kept at 3 locations; Birstall Fire Station, Central

Fire Station in Leicester and the Coleman Road Ambulance Station. These locations give them 24-hour access and a secure compound for the vehicles.

Primarily, but not exclusively, they deliver their service "out of hours" commencing a shift at 7pm through to 7am during weeks days, with a 24 hour service at weekends and all Bank Holidays.



The Air Ambulance work is done during the early evening in daylight.

To date, they have never turned down a call for help from the NHS.

They are proud to be able to support the local NHS and give a little something back to the community.

## **100 Club February Winners**

Brenda Burton	£25
John Wilson	£15
Rosie Low	£10

## **Future Events**

### **Malvern Spring Show Friday 10th May**

There are still places available for our coach trip to Malvern Spring Festival on **Friday May 10th May leaving Bitteswell at 8.45 a.m. and Lutterworth at 9a.m.** Not just a Flower Show this is packed with flowers, food, crafts, family fun and demonstrations.

Please contact Elaine if you know of anyone who may be interested. Tel:- 01455 553425